

The image features a dark teal background with wispy, white smoke or mist-like patterns that drift across the frame. The smoke is most concentrated in the lower-left and middle-right areas, creating a sense of movement and depth. The overall mood is serene and contemplative.

*leave behind*

A woman  
- emotionally drained and  
saddened by the recent  
loss of her husband  
and child -  
buys an antique china  
cabinet for her new house  
only to find a malevolent  
spirit comes along with it



# *the setting*

*A nondescript* Southern small town

(to shoot in Newnan, GA)







*philosophy*

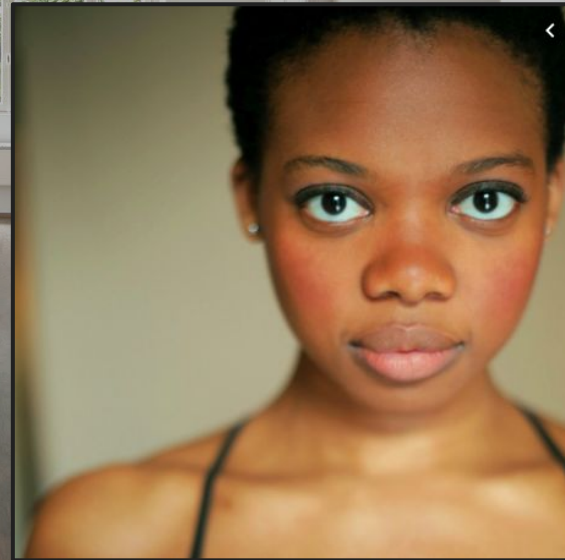
an exploration on how a trauma  
can alter our reality - affect us  
*emotionally* and *physically*.

# *main character*

## *lauren (mid 30s)*

with her tragic recent loss, she is the shell of her former self - once vibrant and quick-witted.

Crushed, hollowed and absolutely reset as a woman, she is numbed by the loss of her family and fumbling to get a sense of herself again.



*talent:* Susan Heyward



## supporting character

sara (mid 30s)

*talent:* Beth Dover

Don't let her hippie mama exterior fool you, she's tough and takes no-nonsense.

But Lauren sees through her tough exterior - has since college - and when her friend loses everything, Sara is the first by her side.



## *supporting character*

*talent:* Chris O'Dowd

chris (*mid 30s*)

a former drummer for a huge Southern rock band, he's reserved and quiet.

He has a calming force effect on Sara. The two met at a concert in college and their one night stand turned into an incredible marriage.



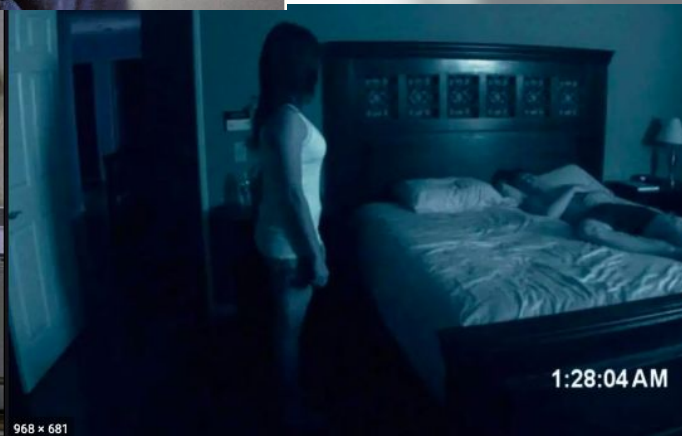


# *look and feel*





# reference films



*the sound  
potential music*

Sharon Van Etten  
Jupiter 4

Lucius  
Eventually

MWard  
Let's Dance

Larkin Poe  
Tom Devil

Neko Case  
Atomic Number  
I Wish I Was the Moon



## director's vision

I wrote *leave behind* to explore the question:  
What happens when your future dies?

I feel there is a time right after a trauma when you're left, fully on your own, to ease back into your life. For me, it was my unexpected divorce - and the time right after that I first experienced night terrors.

Happening the same time every night, it was a dark force sitting on my chest - leaving me unable to move. They happened so often I dreaded going to sleep. As time passed and I processed the loss - they stopped.

In *leave behind*, our heroine is just starting this process - and we never know if the entity is real or in her mind.

Lauren's new house represents her current, fragile state. It's bare with only a few hints of her past life but there is a sadness that permeates the space. Her sadness.

The china cabinet represents the life she thought she would have - the hopes, the dreams of her life with her family that are now gone.

To shoot this - I've always seen stillness and quiet to be more frightening than anything we can come up in our minds. My vision for *leave behind* is to have a very slow pace - sitting with the actress - to convey that something in Lauren's world is off.



• the •

## WONDERMNT

*Director:* Stephanie Skinner [work references here](#)

*Producers:* Kristen Walter, p.g.a., Ebony Blanding

*Director of Photography:* Amber Bournett, [reel here](#)